



THE GENETIC VAULT

ONLINE FROZEN GENETICS SALE

Semen ~ Embryos ~ Genetic Inventory Reductions
Black & Red Simmental, Black & Red Angus & Charolais

sale opens Saturday, January 28 at 12:00PM MST

RaceHorse close-out Monday, January 30 2023 6:00
100% Online Internet Sale farmgatetimeductions.ca PM MST

Welcome

to the 8th Annual Genetic Vault Online Frozen Genetic Sale

Welcome to the 8th Annual Genetic Vault, online frozen Genetics sale. The 2023 edition will be conducted through DLMS Farm Gate Timed Auctions. I'm sure most people are familiar with online timed auctions but if you have any questions, contact Mark Shologan or the DLMS team, or refer to page 3 for a detailed guide to get set up and registered.

The genetics on offer will be encompassed in three breeds, Red Angus, Black Angus and Simmental. All of the genetics are either owned by Bouchard Livestock or storage customers, and will be assembled at the Bouchard Livestock storage facility in Crossfield, AB. The genetics you purchase can be shipped to your semen or embryo center of choice or directly to you. All purchases must be paid for prior to shipping. The genetics on offer will be tried and tested within their respective breeds. The catalogue will be mailed and online, and all pertinent information including export qualifications will be listed. The sale will be listed in catalogue order on Farm Gate. The sale will open at Noon on Saturday January 28th and close out will begin at 6pm MST on Monday, January 30th.

Thank you in advance for joining us and being a part of the 2023 Genetic Vault. All the best to each and every one of you in your livestock endeavors in the coming year. Please contact Chad or Myself at the Bouchard Livestock office or on our listed cell numbers if you have any questions.

Brian Bouchard



Box 1409, Crossfield, Alberta
Canada T0M 0S0
Office: 403.946.4999
info@bouchardlivestock.com
www.bouchardlivestock.com



Brian Bouchard
(403) 813-7999



Chad Lorenz
(403) 896-9585

8th Annual Genetic Vault Frozen Genetic Sale

Saturday, January 28 to Monday, January 30, 2023

100% Online Internet Sale at www.farmgatetimeductions.ca

SALE DAY PHONES:

Brian Bouchard 403.813.7999

Chad Lorenz 403.896.9585

DLMS FARM GATE CONTACT:

Mark Shologan 780.699.5082

Semen & Embryo Shipping: All Semen & Embryos ship FOB Bouchard Livestock International - Crossfield, AB
All Shipping & Handling charges are the cost of the buyer.

Embryo Guarantees (unless otherwise specified): 3 Embryos ~ 1 Pregnancy 4-6 embryos ~ 2 Pregnancy

~ Should replacement embryos be required they will consist of embryos of similar quality and value not to exceed original purchase price.
~ All Genetic Guarantees will be between the buyer & seller.



JOIN US ONLINE www.farmgatetimedauctions.ca

SALE OPENS Saturday, January 28, 2023 at 12:00PM MST

RACEHORSE CLOSE-OUT begins Monday, January 30, 2023 at 6:00PM MST

HOW TO PARTICIPATE IN THE DLMS FARM GATE TIMED AUCTION WITH EXTENDED BIDDING:

1. Visit www.farmgatetimedauctions.ca, click the **LOGIN/REGISTRATION** button. First time users will select the **REGISTER** button from this page. Fill out the registration form to signup for a free user account and it allows you to select a username and password for use on all Farm Gate Timed auctions. This program will send you text and email messages whenever there is activity on your favorite lots or someone challenges your proxy bid and this is why you will be asked for both your current email and cell phone number. If you are a past participant in the Farm Gate Timed auctions simply enter your user name and password to continue. This takes you to a list of both current and upcoming Farm Gate Auctions.
2. You can choose your favourite lots in this sale at this time and the program will allow you to open either all sale lots or just your favorite lots on your screen. Any time there is active bidding on a lot you have identified on your favorite list you will get a text and/or an email noting this activity.
3. The program allows you to place a proxy bid on any sale lot. This in fact protects your interest in any lot of interest for you to a specified dollar value you set, when you may not be able to give 100% attention to the sale. If the lot has a \$2000 bid on it and you place a proxy bid of \$3500 into the system, the computer will bid \$2100 for you but if some one else bids \$2200, the computer will again bid for you, this time at \$2300. The system will look after your interest to a maximum of \$3500. If another bidder is on at \$3600, your proxy will no longer be effective and you will no longer have the winning bid on this lot without once again logging in and bidding again or moving your attention to a second lot of interest.
4. At closing time of the sale the entire sale will extend bidding for 5 minute if a bid is placed on any lot in the sale. Any bid received after 6 PM will extend the sale by 5 minutes from the time of that bid. When no bidding occurs for 5 min the computer will declare the sale finished.
5. Bouchard Livestock will invoice all buyers following the sale, please contact our office (403.946.4999) if you have any questions or to arrange delivery, pick up or shipping of your purchases.

If you require assistance with using the new DLMS Farm Gate web site, if you don't understand how to create a favorites list, if you can't figure out the proxy bid or you just plain want to bid via phone, please talk to any of the DLMS team or Bouchard Livestock staff.

WHAT IS RACEHORSE STYLE SALE CLOSE? Racehorse style sale close is when the entire sale stays open in extended bidding. This type of sale allows you as the bidder to change to a different lot within the same sale if the bidding has gone in to extended bidding.

HOW WILL EXTENDED BIDDING WORK? When we get to the close out end time the clock for close extends with any bid placed with less than 5 min on the clock. This type of extended bidding turns the end time to more of a soft time. Extended bidding allows bidders to compete in lots like a real auction and give all bidders the same time to make a decision. Always follow the clock to see how much time remains in the sale you are interested in.



BBN Miss Smarty 400D

1

consigned by Genetics To Make A Difference

Embryo Lot - BBN Miss Smarty 400D reg # PG1247149

		CE	BW	WW	YW	MILK	MCE	MWWT
IPU RED WESTERN 49X	WS BEEF MAKER R13	9.6	1.9	57.1	81.7	29.7	0.6	58.3
<i>donor pedigree</i>	IPU 52N POCAHONTAS 215U							
MRL MISS SMARTY PANTS III	LFE RED CASINO 3036X							
	TRIPLE C SMARTY PANTS R							

A: 3 Embryos by Bailey's One Of A Kind - Qualified for CAN, USA and AUS

B: 3 Embryos by Bailey's One Of A Kind - Qualified for CAN, USA and AUS

BBN Miss Smarty 400D is a moderate framed, easy fleshing female with lots of hair, big middled, with a sweet feminine front end, an extremely complete package. 400D has a picture-perfect udder, tight and tidy with ideal teat size. She is similar in a lot of ways to her dam Miss Smarty Pants III, but darker red in colour. She is the ideal stature and type to be mated to One of a Kind.



Bailey's One Of A Kind



MRL Miss Smarty Pants III

2

consigned by Genetics To Make A Difference

Embryo Lot - MRL Miss Smarty Pants III ^{reg} # PTG1116486

CE	BW	WW	YW	MILK	MCE	MWWT
11.2	-0.4	50.9	72.5	21.7	4.8	47.2

LFE RED CASINO 3036X

LFE BS LEWIS 322U
LFE DREAM LADY 112P

donor pedigree

TRIPLE C SMARTY PANTS R

TRIPLEC EL PODEROSO REY
GFI GRAMMS DELIGHT L17

A: 3 Embryos by Bailey's One Of A Kind - Qualified for CAN, USA and AUS

B: 3 Embryos by Renegade - Qualified for CAN, USA and AUS

Miss Smarty Pants III is producing the kind the industry is desiring for today's market. She is big ribbed, stout made with hair and eye appeal. She is correct in her structure and very good uddered. Each of these mating's are tried and tested with resulting progeny working in commercial and purebred programs.



Renegade



Bailey's One Of A Kind



Remington Smarty Pants II

3

Embryo Lot - Remington Smarty Pants II reg # BPG749900

consigned by Genetics To Make A Difference

OLF ODIN U5

donor pedigree

TRIPLE C SMARTY PANTS R

ELLINGSON LEGACY M229
OLF LADY TRIATHLON S655
TRIPLE C EL PODEROSO REY
GFI GRAMMS DELIGHT L17

CE	BW	WW	YW	MILK	MCE	MWWT
14.2	-1.5	68.3	97.5	28.6	9.7	62.8

Remington Smarty II is about as productive as you can ask for. She is one of those hard working individuals that no matter how you mate her, you are impressed with the progeny, whether it is the result of a natural calf or an embryo. Smarty II is probably the longest bodied of the Smart Pants daughters. Her sire Odin is one of the best EPD numbered bulls in the breed and that is exactly what Smarty II will give you, calving ease, above average performance and the ability to raise those front pasture offspring

- B: 3 Embryos by Mr CCF Vision** - Qualified for CAN
- B: 3 Embryos by CCLT Alliance 91C** - Qualified for CAN
- C: 3 IVF Embryos by WS Proclamation E202** - Qualified for CAN
- D: 3 IVF Embryos by MRL Missile 138C** - Qualified for CAN
- E: 3 Embryos by LFE Game Face 338F** - Qualified for CAN
- F: 3 Embryos by MRL Power Play 40H** - Qualified for CAN



MR CCF Vision



CCLT Alliance 91C



WS Proclamation E202



MRL Missile 138C



LFE Game Face 338F



MRL Power Play 40H



KWA Ms Mountain 76D

consigned by Genetics To Make A Difference

4

Embryo Lot - KWA Ms Mountain 76D reg # PG1216464

donor pedigree

KWA FLYF RED MOUNTAIN 16Z

BBN MS RED RIDGE 71A

IPU RED WESTERN 49X
KWA MS ROCK 14X
LFE RED RIDGE 809W
BBN MS QUEEN RED 13S

CE	BW	WW	YW	MILK	MCE	MWWT
5.7	4.1	81.5	125.5	31.8	3.2	72.6

- A: 3 Embryos by Bailey's One Of A Kind** - Qualified for CAN, USA and AUS
B: 3 Embryos by Renegade - Qualified for CAN, USA and AUS
C: 3 Embryos by MRL Southern Comfort 54H - Qualified for CAN, USA and AUS

KWA Ms Mountain 76D was the high selling bred heifer at the Ashworth Farm and Ranch 2017 Fall Female Sale. She has a power packed pedigree possessing a number of the breeds great females, including Red Mountain's dam MS Rock 14X, LaBatte's Pocahontas female, the Stacey 103H cow and 76D's dam, the outcross Red Ridge 71A cow. 76D is very impressive in her own right, with one of the breeds stacked pedigrees.



Bailey's One Of A Kind



Renegade



MRL Southern Comfort 54H



MRL Black Countess 5408C

5

Embryo Lot - MRL Black Countess 5408C reg # BPG1139297

consigned by Genetics To Make A Difference

MRL EL TIGRE 52Z
donor pedigree
MRL MISS 776Y

WHEATLAND PREDATOR 922W
 MRL MISS 836W
 BLACK BARON
 MRL MISS 892S

CE	BW	WW	YW	MILK	MCE	MWWT
5.3	5.3	84.0	118.7	27.3	1.0	69.3

- A: 3 Embryos by LFE Game Face 338F** - Qualified for CAN, USA and AUS
B: 3 Embryos by Double Bar D Annuity 635F - Qualified for CAN and USA
C: 3 Embryos MRL Playmaker 36G - Qualified for CAN and USA
D: 3 Embryos by MRL Battle Cry 2G - Qualified for CAN, USA and AUS
E: 3 Embryos by WS Proclamation E202 - Qualified for CAN, USA and AUS
F: 3 IVF Embryos by LFE The Riddler 323B - Qualified for CAN
G: 3 Embryos by MRL Missile 138C - Qualified for CAN

MRL Black Countess 5408C was the high selling female at the McMillen Ranching 2016 Annual Female Sale. We purchased her with Ashworth Farm and Ranch and Crowe Bros. Both of these great programs have progeny that they are retaining and marketing. 408C's first calf was a Black Edition bull calf that was a feature at Ashworth's 2018 Bull Sale. She is just starting to prove her value, the more progeny we see the more valuable she is becoming. She is super attractive, average frame size with ample depth of rib and overall volume. Expect this Countess female to raise both herd bulls and productive daughters. Her pedigree contains a number of the McMillen Ranching great cow families.



MRL Missile 138C



MRL Playmaker 36G



MRL Battle Cry 2G



LFE Game Face 338F



Double Bar D Annuity 635F



WS Proclamation E202



WAGR Diamond 10D



LFE Game Face 338F



Double Bar D Annuity 635F

6

consigned by Genetics To Make A Difference

Embryo Lot - WAGR Diamond 10D reg # BPTG1257249

PROFIT

donor pedigree

3C MELODY M668 BZ

WS PILGRIM H182U
WAGR PANARAMA 204Z
HART SUBZERO G322
3C CROCUS G374 BZ

CE	BW	WW	YW	MILK	MCE	MWWT
0.7	5.9	75.7	103.8	20.1	0.5	58.0

A: 3 Embryos by Double Bar D Annuity 635F - Qualified for CAN, USA and AUS

B: 3 Embryos by KWA FLYF Red Mountain 16Z - Qualified for CAN, USA and AUS

C: 3 Embryos by LFE Game Face 338F - Qualified for CAN, USA and AUS

Diamond 10D was purchased from the Hartman female sale as an open heifer. Her first natural calf was the \$120,000 USD, Focus bull. Two full sister ET daughters, sired by Annuity recently sold as features in the Double Bar D Female sale. This cow has proven her production ability in a big way at a young age.



SWSN Sister Abigail 1E



Sister Abigail - calf picture



WS Proclamation E202

7

consigned by Genetics To Make A Difference

Embryo Lot - SWSN Sister Abigail 1E reg # BPG1252657

WS PILGRIM H182U

donor pedigree

WAGR PANARAMA 204Z

CNS DREAM ON L186
WS MARLA 276M
MR HOC BROKER
3C MELODY M668 BZ

CE	BW	WW	YW	MILK	MCE	MWWT
7.5	4.9	76.9	101.2	19.4	2.0	57.9

Sister Abigail is full sister to the great Profit from Hartman Cattle Co. Most of us are familiar with the impact Profit has had on the Simmental breed. She is a female with huge potential and the ability to impact the breed similar to her full brother Profit, loaded with style and eye appeal. The resulting progeny, when you combine her phenotype and Proclamation's calving ease and performance spread will make a very marketable product.

A: 3 Embryos by WS Proclamation E202 - Qualified for CAN



Black Gold Ms Arbor Mist 42J



Anchor D Imax 250Y



Saint John Gatton 38G

8

consigned by Genetics To Make A Difference

Embryo Lot - Black Gold Ms Arbor Mist 42J reg # P1356189

SBV REPUTATION 707F

donor pedigree

BLACK GOLD MS ARBOR MIST 17G

CHERRY CREEK GLITZ 4D
SUNNY VALLEY RHEA 54C
GAF GUERRERO 810Y
NGDB ARBOR MIST 711E

A: 3 IVF Embryos by Anchor D Imax 250Y - Qualified for CAN and USA

A: 3 IVF Embryos by Saint John Gatton 38G - Qualified for CAN and USA

CE	BW	WW	YW	MILK	MCE	MWWT
9.7	3.0	63.1	93.6	38.8	4.4	70.4

Back Gold Ms 42J was one of the feature lots in the 2022 1st Annual Black Gold Bull & Female sale. 42J possesses one of the deep pedigrees available in the Fullblood Simmental business. Her sire, Reputation is doing an impressive job at Blackgold and the Arbor Mist cow family is one of the good cow families there as well. 42J is big ribbed, hairy and solid colored. The mating to the highly proven Imax should produce the right kind or the Gatton mating will leave you with a very impressive EPD profile.

FULL FLECKVIEH - HOMO POLLED

Owned jointly with Knox Farms of Australia.



Brock's Meesha

9

consigned by Sandy Hill Simmentals

Embryo Lot - Brock's Meesha reg # 586010

PORTERHOUSE KAMUS 113K

donor pedigree

RICHMONDMISSSHAREHOLDER6E

PRL PORTERHOUSE REGENT
MS PRL HELSA 039H
BAR NONE SHAREHOLDER
BAR NONE LOIS

A: 2 Embryos by DDD Broadway G534 - Qualified for CAN

CE	BW	WW	YW	MILK	MCE	MWWT
1.0	6.6	78.6	112.2	44.4	1.7	83.7

GENETICS TO MAKE A DIFFERENCE SIMMENTAL SEMEN LOTS: The next 24 lots as well as lots 10-31, lots 45-49, lots 80-82 will appear in 2023 Genetics to Make A Difference semen directory but this will be the only opportunity in 2022 to purchase these sires in packages as small as 5 dose quantities.

10

consigned by Genetics To Make A Difference

Semen Lot - MRL Sothorn Comfort 54H reg # PG1309135

MRL STATEMENT 3F

R PLUS VENOM 4006B

MRL MISS 6600D

MRL EL TIGRE 52Z

REMINGTON WISE GIRL 235U

MRL MISS 4335B

A: 5 doses - Qualified for CAN

B: 5 doses - Qualified for CAN

C: 5 doses - Qualified for CAN

D: 5 doses - Qualified for CAN

	CE	BW	WW	YW	MILK	MCE	MWWT
	8.2	2.1	80.0	119.5	27.9	4.4	67.9
RR	45	25	35	35	50	45	45



MRL Southern Comfort 54H

11

consigned by Genetics To Make A Difference

Semen Lot - Skors Braveheart 289G reg # PG1289835

SVS CAPTAIN MORGAN 11Z

HARVIE JDF WALLBANGER 111X

SUNNYVALLEY BLK JENNA 88U

LBR CROCKET R81

SKORS MS DREAM ON 103T

SKORS FANCY THAT 200A

A: 5 doses - Qualified for CAN, USA and AUS

B: 5 doses - Qualified for CAN, USA and AUS

C: 5 doses - Qualified for CAN, USA and AUS

D: 5 doses - Qualified for CAN, USA and AUS

	CE	BW	WW	YW	MILK	MCE	MWWT
	6.0	4.3	90.7	138.7	27.8	1.6	73.2
RR	65	10	5	50	20		



Skors Braveheart 289G

12

consigned by Genetics To Make A Difference

Semen Lot - Bailey's One Of A Kind reg # PTG1239874

PROFIT

WS PILGRIM H182U

WAGR PANARAMA 204Z

DSR COMMISSONER R827

SRF MISS DAKOTA 49K

BAILEY'S MS DREAMY 946W

A: 5 doses - Qualified for CAN, USA and AUS

B: 5 doses - Qualified for CAN, USA and AUS

C: 5 doses - Qualified for CAN, USA and AUS

D: 5 doses - Qualified for CAN, USA and AUS

	CE	BW	WW	YW	MILK	MCE	MWWT
	0.5	7.2	93.7	136.2	13.8	0.0	60.7
RR			4	10			



Bailey's One Of A Kind

13

consigned by Genetics To Make A Difference

Semen Lot - MRL Playmaker 36G reg # PG1268797

R PLUS VENOM 4006B

NCB COBRA 47Y

IPU MS. TULA 104Z

MRL EL TIGRE 52Z

REMINGTON WISE GIRL 235U

MRL MISS 4335B

A: 5 doses - Qualified for CAN, USA and AUS

B: 5 doses - Qualified for CAN, USA and AUS

C: 5 doses - Qualified for CAN, USA and AUS

D: 5 doses - Qualified for CAN, USA and AUS

	CE	BW	WW	YW	MILK	MCE	MWWT
	6.5	4.5	99.3	148.7	22.4	3.2	72.1
RR	60		1	1			25



MRL Playmaker 36G



14

consigned by Genetics To Make A Difference

Semen Lot - LFE Game Face 338F reg # BPG1239216

pedigree

LFE CASH 386D

LFE BOUNTY 3118Z
LFE BS FIRSTBASE 39B

LFE BS AMBER 60D

NCB COBRA 47Y
LFE BS AMBER 125B

A: 5 doses - Qualified for CAN

B: 5 doses - Qualified for CAN

C: 5 doses - Qualified for CAN

D: 5 doses - Qualified for CAN

	CE	BW	WW	YW	MILK	MCE	MWWT
	4.2	5.5	86.6	138.0	31.0	4.2	74.3
RK			15	10	35	50	20

15

consigned by Genetics To Make A Difference

Semen Lot - MRL Power Play 40H reg # BPG1309038

pedigree

RUST BULL 18C

COME AS U R RED ROCKET
BEECH BROS YARA 122Y

MRL MISS 6681D

LFE THE RIDDLER 323B
MRL MISS 2490Z

A: 5 doses - Qualified for CAN and USA

B: 5 doses - Qualified for CAN and USA

C: 5 doses - Qualified for CAN and USA

D: 5 doses - Qualified for CAN and USA

	CE	BW	WW	YW	MILK	MCE	MWWT
	4.9	4.4	90.6	139.4	31.1	4.4	76.4
RK			10	5	35	45	10

16

consigned by Genetics To Make A Difference

Semen Lot - Renegade reg # BPG1317349

pedigree

PROFIT

WS PILGRIM H182U
WAGR PANARAMA 204Z

DSFF COUNTESS 357D

MR TR HAMMER 308A ET
HCCO COUNTESS 119B

A: 5 doses - Qualified for CAN

B: 5 doses - Qualified for CAN

C: 5 doses - Qualified for CAN

D: 5 doses - Qualified for CAN

	CE	BW	WW	YW	MILK	MCE	MWWT
	4.4	6.1	87.6	129.9	13.3	1.8	57.1
RK			15	15			

17

consigned by Genetics To Make A Difference

Semen Lot - MRL Battle Cry 2G reg # BPG1268813

pedigree

HART STATE OF WAR 056C

WELSH'S WARSAW 312Z
HART MISS 102A

MRL MISS 7393E

MRL MISSILE 138C
TSN MS EDITION 55W

A: 5 doses - Qualified for CAN and USA

B: 5 doses - Qualified for CAN and USA

C: 5 doses - Qualified for CAN and USA

D: 5 doses - Qualified for CAN and USA

	CE	BW	WW	YW	MILK	MCE	MWWT
	10.2	2.7	104.2	157.3	31.0	6.5	83.1
RK	25	35	1	1	35	20	2

18

consigned by Genetics To Make A Difference

Semen Lot - Mr CCF Vision reg. # BPTG1142690

MR NLC UPGRADE U8676

ELLINGSON LEGACY M229

MS NLC MOJO S6119 B

CNS DREAM ON L186

SS MISS BREAK

GCF MISS ELSA

pedigree

A: 5 doses - Qualified for CAN

B: 5 doses - Qualified for CAN

C: 5 doses - Qualified for CAN

D: 5 doses - Qualified for CAN

	CE	BW	WW	YW	MILK	MCE	MWWT
	10.1	2.5	91.6	131.4	16.3	3.8	62.1
RK	25	30	10	15		55	



Mr CCF Vision

19

consigned by Genetics To Make A Difference

Semen Lot - MRK Perspective 20E reg. # BPTG1207429

MR NLC UPGRADE U8676

MR NLC UPGRADE U8676

GCF MISS ELSA

HARVIE JDF WALLBANGER 111X

IPU MS. LINER 266Y

LRX MS BLACK 91A

pedigree

A: 5 doses - Qualified for CAN and USA

B: 5 doses - Qualified for CAN and USA

C: 5 doses - Qualified for CAN and USA

D: 5 doses - Qualified for CAN and USA

	CE	BW	WW	YW	MILK	MCE	MWWT
	9.6	2.6	87.8	131.2	22.6	5.0	66.5
RK	30	30	15	15		40	55



MRK Perspective 20E

20

consigned by Genetics To Make A Difference

Semen Lot - KWA Future 3G reg. # PG1297714

CIRCLE G EXPORT 51E

WHEATLAND BULL 334A

CIRCLE G RACHEL 5138C

KWA FLYF RED MOUNTAIN 16Z

DOUBLE BAR D FLO 626Z

KWA MS MOUNTAIN 254E

pedigree

A: 5 doses - Qualified for CAN and USA

B: 5 doses - Qualified for CAN and USA

C: 5 doses - Qualified for CAN and USA

D: 5 doses - Qualified for CAN and USA

	CE	BW	WW	YW	MILK	MCE	MWWT
	11.8	2.0	78.6	118.4	25.5	5.2	64.8
RK	15	25	40	35		35	



KWA Future 3G

21

consigned by Genetics To Make A Difference

Semen Lot - KWA Western Alliance 400G reg. # PG1301072

CCLT ALLIANCE 91C

WS PILGRIM H182U

BROOKS SHINIA 1A

IPU RED WESTERN 49X

MRL MISS SMARTY PANTS III

BBN MISS SMARTY 400D

pedigree

A: 5 doses - Qualified for CAN, USA and AUS

B: 5 doses - Qualified for CAN, USA and AUS

C: 5 doses - Qualified for CAN, USA and AUS

D: 5 doses - Qualified for CAN, USA and AUS

	CE	BW	WW	YW	MILK	MCE	MWWT
	10.3	0.7	57.0	66.9	26.7	1.8	55.2
RK	25	10			55		



KWA Western Alliance 400G



MRL Red Whiskey 101B



Wheatland Red Express 890F



KWA Can-Am 123H



MRL Capone 130B

22

consigned by Genetics To Make A Difference

Semen Lot - MRL Red Whiskey 101B reg # PG1116711

pedigree

TNT BOOTLEGGER Z268

MRL MISS 677Y

DCR MR MOON SHINE X102
TNT MISS W70
KOP CROSBY 137W
MRL MISS 355T

A: 5 doses - Qualified for CAN and USA
B: 5 doses - Qualified for CAN and USA
C: 5 doses - Qualified for CAN and USA
D: 5 doses - Qualified for CAN and USA

	CE	BW	WW	YW	MILK	MCE	MWWT
	6.2	5.5	99.7	136.0	21.0	7.8	70.9
RC			1	10		10	30

23

consigned by Genetics To Make A Difference

Semen Lot - Wheatland Red Express 890F reg # PG1269614

pedigree

WHEATLAND EXCHANGE 6139D

WHEATLAND LADY 212Z

PROFIT
WHEATLAND LADY 913W
WHEATLAND STOUT 930W
WHEATLAND LADY 93X

A: 5 doses - Qualified for CAN, USA and AUS
B: 5 doses - Qualified for CAN, USA and AUS
C: 5 doses - Qualified for CAN, USA and AUS
D: 5 doses - Qualified for CAN, USA and AUS

	CE	BW	WW	YW	MILK	MCE	MWWT
	7.3	3.0	61.6	80.7	19.6	2.4	50.4
RC	55	40					

24

consigned by Genetics To Make A Difference

Semen Lot - KWA Can-Am 123H reg # PTG1334084

pedigree

MRL STATEMENT 3F

KWA MS ROCK 14X

R PLUS VENOM 4006B
MRL MISS 6600D
KWA RED ROCK 5T
KWA MS BARON 9U

A: 5 doses - Qualified for CAN and USA
B: 5 doses - Qualified for CAN and USA
C: 5 doses - Qualified for CAN and USA
D: 5 doses - Qualified for CAN and USA

	CE	BW	WW	YW	MILK	MCE	MWWT
	16.0	-0.2	72.6	108.6	37.5	10.7	73.8
RC	2	4			15	1	20

25

consigned by Genetics To Make A Difference

Semen Lot - MRL Capone 130B reg # PTG1116713

pedigree

TNT BOOTLEGGER Z268

MRL MISS 836W

DCR MR MOON SHINE X102
TNT MISS W70
MRL BLACK BEAR 79S
MRL MISS 828S

A: 5 doses - Qualified for CAN and USA
B: 5 doses - Qualified for CAN and USA
C: 5 doses - Qualified for CAN and USA
D: 5 doses - Qualified for CAN and USA

	CE	BW	WW	YW	MILK	MCE	MWWT
	7.2	3.3	74.1	110.5	18.8	1.5	55.9
RC	55	45	60	55			

26

consigned by Genetics To Make A Difference

Semen Lot - Boundary Astute 4C reg # PG1139566

CDI AUTHORITY 77X

NF TRUMP S582
CDI MS CROCKET 88T
TNT TOP GUN R244
KIMLAKE MARIE 342N

KIMLAKE MARIE 840U

A: 5 doses - Qualified for CAN, USA and AUS

B: 5 doses - Qualified for CAN, USA and AUS

C: 5 doses - Qualified for CAN, USA and AUS

D: 5 doses - Qualified for CAN, USA and AUS

	CE	BW	WW	YW	MILK	MCE	MWWT
	5.1	3.8	74.8	112.9	13.9	-1.9	51.3
RK		55	60	50			



Boundary Astute 4C

27

consigned by Genetics To Make A Difference

Semen Lot - KOP Crosby 137W reg # PG718093

MUIRHEAD LIVE WIRE 95R

KENCO/MF POWERLINE 204L
GFP MISS BEARCLAW 100M
R PLUS 2169M
KOP MS FREIGHTLINER 34M

KOP MS BENGIE 6P

A: 5 doses - Qualified for CAN

B: 5 doses - Qualified for CAN

C: 5 doses - Qualified for CAN

D: 5 doses - Qualified for CAN

	CE	BW	WW	YW	MILK	MCE	MWWT
	1.8	6.9	84.3	120.2	33.6	6.3	75.8
RK			20	35	25	20	15



KOP Crosby 137W

28

consigned by Genetics To Make A Difference

Semen Lot - LFE Night Hawk 3013D reg # BPG1204539

LFE TRIUMPH 816A

LFE BEER MONEY 811Y
LFE BISS BS SUNSHINE 609X
LFE PUNK 407U
RRS OBSESSION 87T

LFE RRS CIARA 2158Z

A: 5 doses - Qualified for CAN

B: 5 doses - Qualified for CAN

C: 5 doses - Qualified for CAN

D: 5 doses - Qualified for CAN

	CE	BW	WW	YW	MILK	MCE	MWWT
	15.9	-1.0	68.0	104.8	13.9	2.2	47.9
RK	2	2					



LFE Night Hawk 3013D

29

consigned by Genetics To Make A Difference

Semen Lot - LFE The Riddler 323B reg # BPG1118748

LFE GOTHAM 819Y

LFE THE DARK NIGHT 350U
LFE BEST LADY 47W
TNT TANKER U263
LFE CHARO 3N

LFE BS CHARO 23Y

A: 5 doses - Qualified for CAN

B: 5 doses - Qualified for CAN

C: 5 doses - Qualified for CAN

D: 5 doses - Qualified for CAN

	CE	BW	WW	YW	MILK	MCE	MWWT
	7.3	3.6	104.0	167.1	21.2	7.4	73.2
RK	55	50	1	1		15	20



LFE The Riddler 323B



MRL Missile 138C



VCL LKC Equity 608D



SS/PRS High Voltage 244X



MRL Regulator 148D

30

consigned by Genetics To Make A Difference

Semen Lot - MRL Missile 138C reg # BPTG1139178

pedigree

COME AS U R RED ROCKET

MRL MISS 2423Z

MRL 130Y
MISS XCITING 14X
LFE BUNDI 300X
MRL MISS 493U

A: 5 doses - Qualified for CAN, USA and AUS

B: 5 doses - Qualified for CAN, USA and AUS

C: 5 doses - Qualified for CAN, USA and AUS

D: 5 doses - Qualified for CAN, USA and AUS

	CE	BW	WW	YW	MILK	MCE	MWWT
	7.1	3.2	90.9	122.9	20.	3.2	65.5
RK	55	40	10	25			60

31

consigned by Genetics To Make A Difference

Semen Lot - VCL LKC Equity 608D reg # BPTG1210299

pedigree

PROFIT

BF MISS CRYSTEEL TANGO

WS PILGRIM H182U
WAGR PANARAMA 204Z
SVF STEEL FORCE S701
LLSF TANGO T194

A: 5 doses - Qualified for CAN

B: 5 doses - Qualified for CAN

C: 5 doses - Qualified for CAN

D: 5 doses - Qualified for CAN

	CE	BW	WW	YW	MILK	MCE	MWWT
	12.6	1.1	71.1	88.5	22.6	7.6	58.2
RK	10	15				10	

32

consigned by Genetics To Make A Difference

Semen Lot - SS/PRS High Voltage 244X reg # BPG785675

pedigree

HT/SVF DURACELL T52

KENCO MILEY COTTONTAIL

CNS DREAM ON L186
HTP SVF HONEYDEW
GWS EBONYS TRADEMARK 6N
JM DICE-H25-L24

A: 10 doses - Qualified for CAN

B: 10 doses - Qualified for CAN

C: 10 doses - Qualified for CAN

**The last Voltage inventory from
Bouchard Livestock/The Voltage Group**

	CE	BW	WW	YW	MILK	MCE	MWWT
	14.6	0.5	83.1	111.0	14.6	6.9	56.2
RK	3	10	25	55		15	

33

consigned by Genetics To Make A Difference

Semen Lot - MRL Regulator 148D reg # PTG1184039

pedigree

MRL CAPONE 130B

MRL MISS 677Y

TNT BOOTLEGGER Z268
MRL MISS 836W
KOP CROSBY 137W
MRL MISS 355T

A: 10 doses - Qualified for CAN and USA

B: 10 doses - Qualified for CAN and USA

	CE	BW	WW	YW	MILK	MCE	MWWT
	1.9	7.3	96.9	139.3	28.9	2.8	77.4
RK			2	5	45		10

34

consigned by Genetics To Make A Difference

Semen Lot - MAF King Cobra 3C reg # BPG1152215

NCB COBRA 47Y

LFE VIPER 455U
NCB MISS DREAM 22T
MAF R HORIZON 7Y
MADER TWISTED SISTER 25Y

MAF STAR 31A

A: 10 doses - Qualified for CAN, USA and AUS

B: 10 doses - Qualified for CAN, USA and AUS

CE	BW	WW	YW	MILK	MCE	MWWT
5.6	5.7	95.6	136.0	23.2	4.0	71.0
RK		3	10		55	30



MAF King Cobra 3C

35

consigned by Genetics To Make A Difference

Semen Lot - 3D BLK Full Throttle 483X reg # BPTG735481

WHEATLAND BULL 680S

WHEATLAND BULL 131L
WHEATLAND LADY 351N
TNT DYNAMITE BLACK L137
LFE RED CADILAC 168M

CROSSROAD RAMONA 375R

A: 10 doses - Qualified for CAN

B: 10 doses - Qualified for CAN

CE	BW	WW	YW	MILK	MCE	MWWT
3.2	6.8	82.5	138.5	12.4	-0.6	53.7
RK		25	10			



3D BLK Full Throttle 483X

36

consigned by Genetics To Make A Difference

Semen Lot - MRL Western Force 251B reg # PG1161020

MRL 67X

MRL RED FORCE 12U
IPU RED SATIN 177M
IPU RED WESTERN 49X
MRL MISS 212L

MRL MISS 2543Z

A: 10 doses - Qualified for CAN

B: 10 doses - Qualified for CAN

CE	BW	WW	YW	MILK	MCE	MWWT
8.6	2.6	79.7	130.7	28.9	4.5	68.8
RK	40	30	40	15	45	40



MRL Western Force 251B

37

consigned by Genetics To Make A Difference

Semen Lot - MRL The Starter 39C reg # PG1139131

MRL 91Y

KOP CROSBY 137W
MRL MISS 493U
MRL INTEGRITY 76Y
MRL MISS 477U

MRL MISS 3379A

A: 10 doses - Qualified for CAN, USA and AUS

B: 10 doses - Qualified for CAN, USA and AUS

CE	BW	WW	YW	MILK	MCE	MWWT
13.5	0.9	63.3	90.7	37.3	5.6	68.9
RK	5	10		15	30	40



MRL The Starter 39C



LRX Blaze 55Z



Mr HOC Broker

38

consigned by Genetics To Make A Difference

Semen Lot - LRX Blaze 55Z reg # PG766392

pedigree

HARVIE JDF WALLBANGER 111X

SHS ENTICER P1B
JDF PEPSI 61U

LRX RED 116U

ERIXON RED RUSTLER
LRX 49N

A: 10 doses - Qualified for CAN, USA and AUS

B: 10 doses - Qualified for CAN, USA and AUS

	CE	BW	WW	YW	MILK	MCE	MWWT
	3.2	5.3	96.0	137.5	13.2	-2.6	61.2
RE			2	10			

39

consigned by Bouchard Livestock & MCG Simmentals

Semen Lot - MR HOC Broker reg # BPTG744464

pedigree

SVF STEEL FORCE S701

CNS DREAM ON L186
SVF SHEZA BEAUTY L901

JM BF H25

G&L BLACKFOOT 716D
YC MISS BIK B80

A: 10 doses - Qualified for CAN

B: 10 doses - Qualified for CAN

C: 10 doses - Qualified for CAN

D: 6 doses - Qualified for CAN

	CE	BW	WW	YW	MILK	MCE	MWWT
	4.2	4.5	77.2	108.4	18.0	1.6	56.6
RE			50	60			

40

consigned by Sandy Hill Simmentals

Semen Lot - Crossroad Connected 12G reg # BPG1266301

Sire: CROSSROAD RED STETSON 9E **Dam:** PERKS BLACK DOLL 1121Y

A: 5 doses - Qualified for CAN

B: 5 doses - Qualified for CAN

C: 5 doses - Qualified for CAN

D: 5 doses - Qualified for CAN

41

consigned by Sandy Hill Simmentals

Semen Lot - WJS Trailblazer 108H reg # BPTG1328987

Sexed Female

Sire: NGDB STRUCTURE 34D **Dam:** RF JOY'S ELEGANCE 747E

A: 5 doses - Qualified for CAN

42

consigned by Genetics To Make A Difference

Semen Lot - TNT Dynamite Black L137 reg # PG634254

Sire: RW BOMBER 8H **Dam:** OPPS WIS GM2

A: 10 doses - Qualified for CAN and USA

B: 10 doses - Qualified for CAN and USA

43

consigned by Genetics To Make A Difference

Semen Lot - KS Bravado P68 reg # PG634254

Sire: FR REZULT **Dam:** RIV RED BRIGADIA 969J

A: 10 doses - Qualified for CAN and USA

44

consigned by Genetics To Make A Difference

Semen Lot - TNT Top Cut P274 reg # BPG654372

Sire: TNT FORTUNE BUILDER H122 **Dam:** MISS ARNOLD K2231

A: 10 doses - Qualified for CAN

B: 10 doses - Qualified for CAN



Crossroad Connected 12G



WJS Trailblazer 108H



TNT Dynamiter Black L137

GENETICS TO MAKE A DIFFERENCE FULLBLOOD SEMEN LOTS:
The next 5 lots will appear in 2023 Genetics to Make A Difference semen directory.

45

Semen Lot - Saint John Gatton 38G reg # P1359312

FSS POLLED HENDRIX

FSS MAXIMUS
FSS BLAIRSTOWN
OPF LYDAS LEGACY FF
CRIMSON MISS ERIKA FF

OPF ERIKA FF

A: 5 doses - Qualified for CAN
B: 5 doses - Qualified for CAN

C: 5 doses - Qualified for CAN
D: 5 doses - Qualified for CAN

CE	BW	WW	YW	MILK	MCE	MWWT
8.2	3.8	68.8	99.8	33.8	4.9	68.2
45	55			25	40	45



Saint John Gatton 38G

46

Semen Lot - Anchor D Imax 250Y reg # PT753794

HEMR SAMURAI 7S

ANCHOR "T" IKON 1H
JB CDN KANANASKIS 4019
DORA LEE JAKE
DORA LEE ELECTRIC

DORA LEE ELEXIS

A: 5 doses - Qualified for CAN and USA
B: 5 doses - Qualified for CAN and USA

C: 5 doses - Qualified for CAN and USA
D: 5 doses - Qualified for CAN and USA

CE	BW	WW	YW	MILK	MCE	MWWT
13.8	0.9	41.9	52.8	41.3	7.5	62.3
5	10			3	10	



Anchor D Imax 250Y

47

Semen Lot - Silverlake Rocky 238C reg # P1161203

LFS POL BALBOA 40U

DAYTON'S POL NEUMANN
RRV NATALIE
SILVERLAKE STORM
K&S LUCKY LADY 11N

SILVERLAKE ISLA

A: 5 doses - Qualified for CAN and USA
B: 5 doses - Qualified for CAN and USA

C: 5 doses - Qualified for CAN and USA
D: 5 doses - Qualified for CAN and USA

CE	BW	WW	YW	MILK	MCE	MWWT
2.2	5.3	73.1	96.2	34.8	1.1	71.4
				25		30



Silverlake Rocky 238C

48

Semen Lot - Silver Lake Dealer 60B reg # T1136892

CHAMPS ROMANO

SMITHBILT MOLSON 21M
CHAMPS PRICILLA
BAR 5 SA STRIDE 413P
BLCC MISS REGAN 253S

BLCC MISS STRIDE 57W

A: 5 doses - Qualified for CAN, USA and AUS
B: 5 doses - Qualified for CAN, USA and AUS
C: 5 doses - Qualified for CAN, USA and AUS
D: 5 doses - Qualified for CAN, USA and AUS

CE	BW	WW	YW	MILK	MCE	MWWT
4.1	6.7	76.9	112.6	42.1	2.9	80.6
		50	50	2		3



Silver Lake Dealer 60B

49

Semen Lot - Crossroad Polled Future 35C reg # P1135883

CROSSROAD VINTAGE 125Z

SOLOWAY ADONIS
FTS ENDORA 163P
CROSSROAD TUXEDO 222T
CROSSROAD STARLA 473S

CROSSROAD ZELESTE 19Z

A: 5 doses - Qualified for CAN, USA and AUS
B: 5 doses - Qualified for CAN, USA and AUS
C: 5 doses - Qualified for CAN, USA and AUS
D: 5 doses - Qualified for CAN, USA and AUS

CE	BW	WW	YW	MILK	MCE	MWWT
3.4	5.3	62.8	87.1	35.2	-5.2	66.6
				20		55



Crossroad Polled Future



Crossroad Radium 789U



PRL Houston 005H



Shawacres Jahari 50L

50

Semen Lot - Crossroad Radium 789U reg. # 695165

consigned by Crossroad Farms

Sire: MF MR. EVAN 14P **Dam:** CROSSROAD PANDITA 308P

A: 10 doses - Qualified for CAN

B: 10 doses - Qualified for CAN

C: 10 doses - Qualified for CAN

55

Semen Lot - Shawacres Jahari 50L reg. # T559299-KN

consigned by Genetics To Make A Difference

Sire: BHR DOORN G629E **Dam:** MISS SHAWACRES HEIDI 1H

A: 10 doses - Qualified for CAN and USA

B: 10 doses - Qualified for CAN and USA

C: 10 doses - Qualified for CAN and USA

51

Semen Lot - Kuntz Climax 12C reg. # T1152754

consigned by Pine Creek Simmentals

Sire: MF MR. EVAN 14P **Dam:** CROSSROAD PANDITA 308P

A: 5 doses - Qualified for CAN

B: 5 doses - Qualified for CAN

C: 5 doses - Qualified for CAN

D: 5 doses - Qualified for CAN

56

Semen Lot - PRL Porterhouse Regent reg. # T315475-KN

consigned by Genetics To Make A Difference

Sire: ROGANT **Dam:** MS PRL NITE ANCHOR 087B

A: 10 doses - Qualified for CAN and USA

B: 10 doses - Qualified for CAN and USA

C: 10 doses - Qualified for CAN and USA

52

Semen Lot - Double Bar D Rival 201A reg. # T1121186

consigned by Pine Creek Simmentals

Sire: MRLN ROGAR **Dam:** DOUBLE BAR D JOCELINE

A: 10 doses - Qualified for CAN

B: 10 doses - Qualified for CAN

C: 10 doses - Qualified for CAN

D: 10 doses - Qualified for CAN

E: 10 doses - Qualified for CAN

57

Semen Lot - Starwest Total Value reg. # P763485

consigned by Genetics To Make A Difference

Sire: DOUBLE BAR D SPITFIRE 20X **Dam:** PHS POLLED WINFALL 27W

A: 10 doses - Qualified for CAN, USA and AUS

B: 10 doses - Qualified for CAN, USA and AUS

C: 10 doses - Qualified for CAN, USA and AUS

53

Semen Lot - MFI Jeremiah 9022 reg. # 721721

consigned by Bonchuk Farms

Sire: GIBBONS JEREMIAH **Dam:** MFI PETRA 2093

A: 10 doses - Qualified for CAN

B: 10 doses - Qualified for CAN

C: 10 doses - Qualified for CAN

58

Semen Lot - Rooinik reg. # T500417-KN

consigned by Genetics To Make A Difference

Sire: OVERAL BIRNER **Dam:** WISP-WILL PEGGY 5TH

A: 10 doses - Qualified for CAN and USA

B: 10 doses - Qualified for CAN and USA

C: 10 doses - Qualified for CAN and USA

54

Semen Lot - PRL Houston 005H reg. # 501018-KN

consigned by Bonchuk Farms

Sire: ROGANT **Dam:** MS PRL NITE-ANCHOR 109B

A: 10 doses - Qualified for CAN

B: 10 doses - Qualified for CAN

C: 10 doses - Qualified for CAN

59

Semen Lot - Gibby's Real Deal 25T reg. # P673069

consigned by Genetics To Make A Difference

Sire: GIBBY'S NICHOLAS 302N **Dam:** GIBBY'S NABRISKA 16N

A: 10 doses - Qualified for CAN, USA and AUS

B: 10 doses - Qualified for CAN, USA and AUS

C: 10 doses - Qualified for CAN, USA and AUS



Starwest Total Value



Eldandi



PRL Porterhouse Regent



Bel Western Union 2nd



LRX Jungle Jim 81A



Great Guns Regio 9R

60

consigned by Genetics To Make A Difference

Semen Lot - BHR Baron SA 2842P reg. # T645655

Sire: KYKSO HADAU **Dam:** TRANS-MAGALIES MABIE

A: 10 doses - Qualified for CAN and USA
B: 10 doses - Qualified for CAN and USA
C: 10 doses - Qualified for CAN and USA

67

consigned by Genetics To Make A Difference

Semen Lot - Caseys Majesty 1Y reg. # T209473

Sire: KNIGHT MAJESTY 247S **Dam:** CHERRY'S HEIDI

A: 10 doses - Qualified for CAN

61

consigned by Genetics To Make A Difference

Semen Lot - MFL Universe 28U reg. # T46046

Sire: BOLD **Dam:** MFL PETRA 95P

A: 10 doses - Qualified for CAN, USA and AUS
B: 10 doses - Qualified for CAN, USA and AUS
C: 10 doses - Qualified for CAN, USA and AUS

68

consigned by Genetics To Make A Difference

Semen Lot - Bel Western Union 2nd reg. # T351194-KN

Sire: BEL WESTERN UNION 5Z **Dam:** MOYGADDY JENNIFER

A: 10 doses - Qualified for CAN
B: 10 doses - Qualified for CAN

62

consigned by Genetics To Make A Difference

Semen Lot - Eldandi 907H reg. # T417512-KN

Sire: MON-BIJOU MAGNUM **Dam:** WISP-WILL PEGGY 5TH

A: 10 doses - Qualified for CAN and USA
B: 10 doses - Qualified for CAN and USA
C: 10 doses - Qualified for CAN and USA

69

consigned by Genetics To Make A Difference

Semen Lot - LRX Jungle Jim 81A reg. # T794442

Sire: KING OF JUNGLE ZURITA **Dam:** LRX MS EVAN 76N

A: 10 doses - Qualified for CAN and USA
B: 10 doses - Qualified for CAN and USA

63

consigned by Genetics To Make A Difference

Semen Lot - Klyber reg. # T500203-KN

Sire: MON-BIJOU MAGNUM **Dam:** WISP-WILL RONA

A: 10 doses - Qualified for CAN and USA
B: 10 doses - Qualified for CAN and USA
C: 10 doses - Qualified for CAN and USA

70

consigned by Great Guns Simmentals

Semen Lot - Great Guns Winston 13W reg. # S1164262

Sire: EXODUS **Dam:** GREAT GUNS NEUVA 18N

A: 10 doses - Qualified for CAN
B: 10 doses - Qualified for CAN
C: 10 doses - Qualified for CAN

64

consigned by Genetics To Make A Difference

Semen Lot - MFL Boss Man 5A reg. # T244695-KN

Sire: BOLD **Dam:** MFL PETRA 95P

A: 10 doses - Qualified for CAN
B: 10 doses - Qualified for CAN
C: 10 doses - Qualified for CAN

71

consigned by Great Guns Simmentals

Semen Lot - Great Guns Regio 9R reg. # T621436

Sire: GREAT GUNS TX AMOS 42M **Dam:** GREAT GUNS KANDY 1K

A: 10 doses - Qualified for CAN
B: 10 doses - Qualified for CAN
C: 10 doses - Qualified for CAN

65

consigned by Genetics To Make A Difference

Semen Lot - Gidsco Appollo 3F reg. # T391534-KN

Sire: ANTONIUS **Dam:** MFL BRENDA 65B

A: 10 doses - Qualified for CAN and USA
B: 10 doses - Qualified for CAN and USA
C: 10 doses - Qualified for CAN and USA

72

consigned by Great Guns Simmentals

Semen Lot - Mr Lynn 009Y-Hafke reg. # T211282

Sire: HAFKE **Dam:** MS LYNN S63

A: 10 doses - Qualified for CAN
B: 10 doses - Qualified for CAN
C: 10 doses - Qualified for CAN

66

consigned by Genetics To Make A Difference

Semen Lot - BHR Draco SA 628N reg. # T621436

Sire: KYKSO HAPED **Dam:** AI-AI RINA

A: 10 doses - Qualified for CAN and USA
B: 10 doses - Qualified for CAN and USA

73

consigned by Great Guns Simmentals

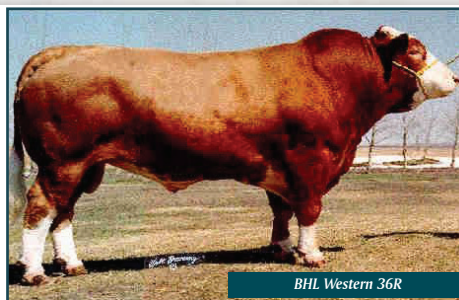
Semen Lot - Great Guns Hosea 48F reg. # T353608-KN

Sire: HASALZ **Dam:** GREAT GUNS LEAH 23D

A: 10 doses - Qualified for CAN
B: 10 doses - Qualified for CAN
C: 10 doses - Qualified for CAN



Great Guns Bunz 60H



BHL Western 36R



Great Guns Wyatt 12W

74

Semen Lot - Great Guns Herman 4D reg. # T307142-KN

consigned by Great Guns Simmentals

Sire: GREAT GUNS FREDERICK 48B **Dam:** DEMBY HERINDE 154X

A: 10 doses - Qualified for CAN
B: 10 doses - Qualified for CAN
C: 10 doses - Qualified for CAN

77

Semen Lot - Great Guns Wyatt 12W reg. # S1164265

consigned by Great Guns Simmentals

Sire: EXODUS **Dam:** GREAT GUNS KANDY 1K

A: 10 doses - Qualified for CAN
B: 10 doses - Qualified for CAN
C: 10 doses - Qualified for CAN

75

Semen Lot - Great Guns Hannes 51H reg. # 401577-KN

consigned by Great Guns Simmentals

Sire: GREAT GUNS HOSEA 48F **Dam:** GREAT GUNS SENTA 36Z

A: 10 doses - Qualified for CAN
B: 10 doses - Qualified for CAN
C: 10 doses - Qualified for CAN

78

Semen Lot - BHL Western 36R reg. # 96802

consigned by Porter Ranches

Sire: SIM-ROC C&B WESTERN **Dam:** FASSA

A: 10 doses - Qualified for CAN
B: 10 doses - Qualified for CAN

76

Semen Lot - Great Guns Binz 60H reg. # 401590-KN

consigned by Great Guns Simmentals

Sire: GREAT GUNS BRUNO 21X **Dam:** GREAT GUNS LEAH 23D

A: 10 doses - Qualified for CAN and USA
B: 10 doses - Qualified for CAN and USA
C: 10 doses - Qualified for CAN and USA

79

Semen Lot - Great Guns Moll'Son reg. # 111852

consigned by Porter Ranches

Sire: MOLL 2ND **Dam:** CELTIC MARIA

A: 10 doses - Qualified for CAN
B: 10 doses - Qualified for CAN



APLX Coach 37J

80

Semen Lot - APLX Coach 37J reg. # P1366322

consigned by Genetics To Make A Difference

DOUBLE BAR D CONFIDENCE 179D

sire pedigree

APPLECROSS SAPPHIRE 11B

DOUBLE BAR D CHANDLER 143
DOUBLE BAR D LYNNEA 613Y
APLX ESCALADE 9Y
DORA LEE JEWEL

CE	BW	WW	YW	MILK	MCE	MWWT
9.3	3.0	76.9	118.3	36.4	6.5	74.9

A: 5 doses - Qualified for CAN
B: 5 doses - Qualified for CAN
C: 5 doses - Qualified for CAN
D: 5 doses - Qualified for CAN
E: 5 doses - Qualified for CAN
F: 5 doses - Qualified for CAN

**HOMO POLLED, FULL FLECK
NON DILUTOR**

81

consigned by Genetics To Make A Difference

Semen Lot - Red MRLA Resource 137E reg # 1955865

MRLA RELOAD 56C

S A V RESOURCE 1441
RED MRLA MISS 641Y

MRLA MISS 4422B

S A V HARVESTOR 0338
MRLA MISS 433T

pedigree

A: 5 doses - Qualified for CAN, USA and AUS**B: 5 doses** - Qualified for CAN, USA and AUS**C: 5 doses** - Qualified for CAN, USA and AUS**D: 5 doses** - Qualified for CAN, USA and AUS

CE	BW	WW	YW	MCE	MILK
2.0	3.4	37	85	3.0	22



Red MRLA Resource 137E

82

consigned by Genetics To Make A Difference

Semen Lot - Red MRLA Respect 42G reg # 2124383

RED U2 RETROSPECT 29E

RED U-2 REVERENCE 198C
RED U-2 ANEXA 226C

MRLA MISS 4408B

S A V HARVESTOR 0338
RED MRLA MISS 803R

pedigree

A: 5 doses - Qualified for CAN, USA and AUS**B: 5 doses** - Qualified for CAN, USA and AUS**C: 5 doses** - Qualified for CAN, USA and AUS**D: 5 doses** - Qualified for CAN, USA and AUS

CE	BW	WW	YW	MCE	MILK
6.0	4.0	49	89	8.0	24



Red MRLA Respect 42G

83

consigned by Genetics To Make A Difference

Semen Lot - Red BUF CRK Hobo 1961 reg # 706951

Sire: RED BUF CRK HOBO 1413 **Dam:** RED BUF CR CARRIE VC1174**A: 10 doses** - Qualified for CAN**B: 7 doses** - Qualified for CAN

Red Brylor SDL Pasquale 213P

84

consigned by Genetics To Make A Difference

Semen Lot - Red Brylor SDL Pasquale 213P reg # 1242867

Sire: RED VGW RAMBLER 1000 **Dam:** RED XXX LAKME 70M**A: 3 doses** - Qualified for CAN

Red Fine Line Mulberry 26P

85

consigned by Lorenz Angus

Semen Lot - Red Fine Line Mulberry 26P reg # 1237972

Sire: RED COMPASS MULBERRY 449M **Dam:** RED DUS FAYETTE 8G**A: 2 doses** - Qualified for CAN

86

consigned by *Genetics To Make A Difference***Semen Lot - Peak Dot Range Delivery 562C** reg. # 1882298**VISION UNANIMOUS 1418**VISIONTOPLINE ROYAL STOCKMAN
VISION EDELLA 665

pedigree

PEAK DOT BARDOLIA 353ZPEAK DOT BOLD 204U
BARDOLIA OF PEAK DOT 231W**A: 10 doses** - Qualified for CAN**B: 10 doses** - Qualified for CAN**C: 10 doses** - Qualified for CAN

CE	BW	WW	YW	MCE	MILK
3.1	1.0	56	104	7.0	14



Peak Dot Range Delivery 562C

87

consigned by *Sheidaghan Angus***Semen Lot - S A V Final Answer 0035** reg. # 1061938**Sire:** SITZ TRAVELER 8180 **Dam:** S A V EMULOUS 8145**A: 3 doses** - Qualified for CAN**B: 3 doses** - Qualified for CAN

88

consigned by *Sheidaghan Angus***Semen Lot - S A V 004 Density 4336** reg. # 1266311**Sire:** S A V 8180 TRAVELER 004 **Dam:** S A V MAY 7238**A: 3 doses** - Qualified for CAN**B: 3 doses** - Qualified for CAN

89

consigned by *Sheidaghan Angus***Semen Lot - N Bar Emulation EXT** reg. # 849773**Sire:** EMULATION N BAR 5522 **Dam:** N BAR PRIMROSE 2424**A: 3 doses** - Qualified for CAN

90

consigned by *Sheidaghan Angus***Semen Lot - S AF 598 Bando 5175** reg. # 994198**Sire:** BON VIEW BANDO 598 **Dam:** S A F ROYAL LASS 1002**A: 5 doses** - Qualified for CAN

91

consigned by *Sheidaghan Angus***Semen Lot - Bon View New Design 878** reg. # 981361**Sire:** B/R NEW DESIGN 036 **Dam:** BON VIEW GAMMER 85**A: 5 doses** - Qualified for CAN

92

consigned by *Sheidaghan Angus***Semen Lot - Sandy Bar Advantage 43M** reg. # 1119001**Sire:** TC ADVANTAGE **Dam:** SANDY BAR JEMINA 44K**A: 5 doses** - Qualified for CAN

93

consigned by *Sheidaghan Angus***Semen Lot - S Titlest 1145** reg. # 1714045**Sire:** RA LINCOLN W144 **Dam:** S CORA 572**A: 2 doses** - Qualified for CAN

94

consigned by *Sheidaghan Angus***Semen Lot - PA Fortitude 2500** reg. # 1773852**Sire:** GAR-EGL PROTEGE **Dam:** G G CLARA 0171**A: 1 dose** - Qualified for CAN

95

consigned by *Sheidaghan Angus***Semen Lot - Crescent Creek Brave Heart 35F** reg. # 849484**Sire:** RITO 8094 PRAIRIELANE 2060 **Dam:** CRESCENT CREEK BLACKCAP 112A**A: 1 dose** - Qualified for CAN

96

consigned by *Sheidaghan Angus***Semen Lot - Hoover Dam** reg. # 1552414**Sire:** SYDGEN C C & 7 **Dam:** ERICA OF ELLSTON C124**A: 1 dose** - Qualified for CAN

Bon View New Design 878



S A V Final Answer 0035



S Titlest 1145



97

consigned by Sandy Hill Simmentals

Semen Lot - Brooking Mercury 9057 reg. # 2098827**Sire:** BROOKING FIREBRAND 6068 **Dam:** BROOKING BEAUTY 333**A: 10 doses** - Qualified for CAN

102

consigned by Stewart Cattle Co.

Semen Lot - G A R Grid Maker reg. # 1129870**Sire:** G D A R TRAVELER 044 **Dam:** G A R PRECISION 2536**A: 2 doses** - Qualified for CAN

98

consigned by Stewart Cattle Co.

Semen Lot - TC Stockman 365 reg. # 876845**Sire:** TC STOCKMAN **Dam:** TC PRIDE 0014**A: 3 doses** - Qualified for CAN**B: 3 doses** - Qualified for CAN**C: 3 doses** - Qualified for CAN

103

consigned by Stewart Cattle Co.

Semen Lot - Pine Drive Big Sky reg. # 572983**Sire:** LE MAR EILEENMERE LAD 549 **Dam:** BENLOCK BLACKCAP 108K**A: 1 dose** - Qualified for CAN

99

consigned by Stewart Cattle Co.

Semen Lot - TC Freedom 104 reg. # 1169224**Sire:** CONNEALY FOREFRONT **Dam:** T C RUBY 9095**A: 1 dose** - Qualified for CAN

104

consigned by Stewart Cattle Co.

Semen Lot - G D A Universe 726G reg. # 992318**Sire:** PAPA UNIVERSE 515 **Dam:** G D A BONNY 412D**A: 3 doses** - Qualified for CAN

100

consigned by Stewart Cattle Co.

Semen Lot - S A V 004 Density 4336 reg. # 876845**Sire:** S A V 8180 TRAVELER 004 **Dam:** S A V MAY 7238**A: 4 doses** - Qualified for CAN

105

consigned by Stewart Cattle Co.

Semen Lot - Remitall Linebacker 204L reg. # 1073466**Sire:** SITZ ALLIANCE 6595 **Dam:** REMITALL EILEEN 170H**A: 8 doses** - Qualified for CAN

101

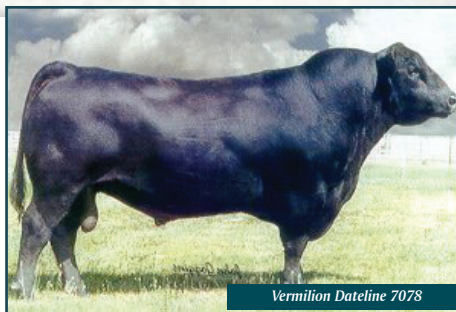
consigned by Stewart Cattle Co.

Semen Lot - O G L Battle Cry 427 128 reg. # 871986**Sire:** NICHOLS EUREKA W57 **Dam:** O G L DUSTY ROSE 128 902**A: 1 dose** - Qualified for CAN

106

consigned by Stewart Cattle Co.

Semen Lot - Stevenson Bruno 561G reg. # 955072**Sire:** STEVENSON ROYCE 741C **Dam:** JRS ENCHANTRESS 16A**A: 4 doses** - Qualified for CAN



107

consigned by Stewart Cattle Co.

Semen Lot - S A Neutron 377 reg. # 1074546

Sire: S A F NEUTRON Dam: S A QUEEN SUSAN 102

A: 1 dose - Qualified for CAN

108

consigned by Lorenz Angus

Semen Lot - Sitz Resilient 10208 reg. # 2198075

Sire: SITZ STELLAR 726D Dam: SITZ MISS BURGESS 1856

A: 5 doses - Qualified for CAN

B: 5 doses - Qualified for CAN

109

consigned by Lorenz Angus

Semen Lot - Vermilion Dateline 7078 reg. # 1018284

Sire: CONNEALY DATELINE Dam: VERMILION BLACKBIRD 5044

A: 3 doses - Qualified for CAN

B: 3 doses - Qualified for CAN

110

consigned by Lorenz Angus

Semen Lot - Stevenson Royce 741C reg. # 812009

Sire: G D A R ROYCE 131 Dam: AHLGRENS ESTELLA 2758 E T E

A: 2 doses - Qualified for CAN

111

consigned by Lorenz Angus

Semen Lot - A A R Ten X 7008 S A reg. # 1700255

Sire: MYTTY IN FOCUS Dam: A A R LADY KELTON 5551

A: 3 doses - Qualified for CAN

112

consigned by Lorenz Angus

Semen Lot - Young Dale Hi Definition 185B reg. # 1791785

Sire: PF HOOVER DAM 041 Dam: BLACK HAMCO COUNTESS 417T

A: 2 doses - Qualified for CAN

113

consigned by Lorenz Angus

Semen Lot - K C Shogun K22 80 reg. # 589495

Sire: PILGRIM OF ALDO Dam: MAYFLOWER REVOLUTION A S

A: 6 doses - Qualified for CAN

CHAROLAIS SEMEN LOT

114

consigned by Stewart Cattle Co.

Semen Lot - Keys Front Page 189H PLD reg. # PMC228806

Sire: ZUP PEUGEOT ET Dam: MISS KEYS LEGEND 49D POLL

A: 4 doses - Qualified for CAN

THE GENETIC VAULT



Timed Auctions Made Easy

sale opens
Saturday, January 28
12:00PM MST

RaceHorse close-out
Monday, January 30
6:00PM MST

100% Online Internet Sale farmgatetimedauctions.ca



Bouchard Livestock International
Box 1409
Crossfield, Alberta Canada
T0M 0S0



THE GENETIC VAULT



RaceHorse close-out
Monday, January 30 2023
6:00PM MST

100% Online Internet Sale farmgatetimedauctions.ca